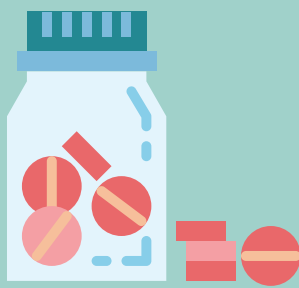


# FORMULARY SEARCH



Our Formulary search tool is designed to provide you with information about the medications that may be covered under your plan with Medical Mutual. The following information pertains to the Basic and Basic Plus Formularies.

## BASIC AND BASIC PLUS FORMULARY



The Basic Formulary includes broad coverage and access to clinically effective generic and brand-name drugs.

This formulary search tool can be accessed here: [express-scripts.com/mmoBasicPlus](https://express-scripts.com/mmoBasicPlus)



## SEARCHING FOR YOUR MEDICATION

1

Click on Formulary Drug Coverage

2

Enter the name of your medication

3

Select the strength of medication you take

4

Select how often you take the medication

## UNDERSTANDING THE RESULTS



YES

Covered



NO

Not Covered



YES

Covered with Approval

The "Drug Coverage" results will tell you if the medication is anticipated to be covered or not by your plan. Keep in mind, some medications may need to be filled at a certain type of pharmacy.



Here, you can also access drug information, see generic equivalents or learn about formulary alternatives for the medication you have searched for.

## COVERAGE MANAGEMENT AND REVIEW



Medical Mutual uses coverage management programs to make sure you get the right medication for your condition at the best value. A coverage alert popup means that certain medications may not be covered until a review of your medical information has been approved.



### Prior Authorization

We check to make sure your drug is prescribed appropriately and is proven effective and safe for your condition.



### Step Therapy

These rules promote the use of lower-cost drugs in place of more costly medications.



### Quantity Limits

Your plan may only cover a certain quantity of medication per fill or a certain quantity over a given time.

## GETTING YOUR MEDICATION WITH COVERAGE MANAGEMENT



Ask your provider to complete an electronic Prior Authorization request. If they need assistance, ask them to visit the Express Scripts online portal at [ESRX.com/PA](https://ESRX.com/PA) or call Express Scripts at 1-800-417-1764 to arrange a review.

Coverage is subject to the definitions, limitations, exclusions and parameters set forth in your official plan benefit documents. Please refer to your Certificate or Benefit Book for more information.